



Download from
Dreamstime.com

This watermarked comp image is for previewing purposes only.



ID 2468711

© Milan Surkala | Dreamstime.com

[Amd Overdrive Enable Manual Fan Control Greyed Out](#)

CPU-Z

CPU | Caches | Mainboard | Memory | SPD | Graphics | About

Processor

Name: AMD Phenom II X6 1705T
 Code Name: Thuban Max TDP: 189 W
 Package: Socket AM3 (938)
 Technology: 45 nm Core Voltage: 1.476 V

Specification: AMD Processor model unknown
 Family: F Model: A Stepping: 0
 Ext. Family: 10 Ext. Model: A Revision: PH-E0
 Instructions: MMX(+), 3DNow!(+), SSE (1, 2, 3, 4A), x86-64, AMD-V

Clocks (Core #0)

Core Speed: 3902.3 MHz
 Multiplier: x 17.5
 Bus Speed: 223.0 MHz
 HT Link: 2006.9 MHz

Cache

L1 Data: 6 x 64 KBytes 2-way
 L1 Inst: 6 x 64 KBytes 2-way
 Level 2: 6 x 512 KBytes 16-way
 Level 3: 6 MBytes 48-way

Selection: Processor #1 Cores: 6 Threads: 6

CPU-Z Version 1.58 Validate OK

CPU-Z

CPU | Caches | Mainboard | Memory | SPD | Graphics | About

General

Type: DDR3 Channels #: Dual
 Size: 8192 MBytes DC Mode: Unganged
 NB Frequency: 3121.8 MHz

Timings

DRAM Frequency: 891.9 MHz
 FSB:DRAM: 1:4
 CAS# Latency (CL): 7.0 clocks
 RAS# to CAS# Delay (tRCD): 9 clocks
 RAS# Precharge (tRP): 8 clocks
 Cycle Time (tRAS): 20 clocks
 Bank Cycle Time (tRC): 42 clocks
 Command Rate (CR): 1T
 DRAM Idle Timer:
 Total CAS# (tRDRAM):
 Row To Column (tRCD):

CPU-Z Version 1.58 Validate OK

AIDA64 Cache & Memory Benchmark

	Read	Write	Copy	Latency
Memory	11654 MB/s	9937 MB/s	14252 MB/s	35.3 ns
L1 Cache	124574 MB/s	62320 MB/s	83110 MB/s	0.8 ns
L2 Cache	31188 MB/s	24823 MB/s	28353 MB/s	2.4 ns
L3 Cache	11555 MB/s	13143 MB/s	15156 MB/s	5.3 ns

CPU Type: HexaCore AMD Phenom II X6 (Thuban, Socket AM3)
 CPU Clock: 3902.5 MHz
 CPU FSB: 223.0 MHz (original: 200 MHz, overclock: 12%)
 CPU Multiplier: 17.5x CPU Stepping: PH-E0

Memory Bus: 892.0 MHz DRAM:FSB Ratio: 24:6
 Memory Type: Unganged Dual Channel DDR3-1784 SDRAM (7-9-8-20 CR1)
 Chipset: AMD 880G, AMD K10
 Motherboard: Biostar TA880GU3+

AIDA64 v1.85.1600 / BenchDLL 2.7.380-x64 (c) 1995-2011 FinalWire Ltd.

Save Start Benchmark Close

[Amd Overdrive Enable Manual Fan Control Greyed Out](#)



Download from
Dreamstime.com

This watermarked comp image is for previewing purposes only.



ID 2468711

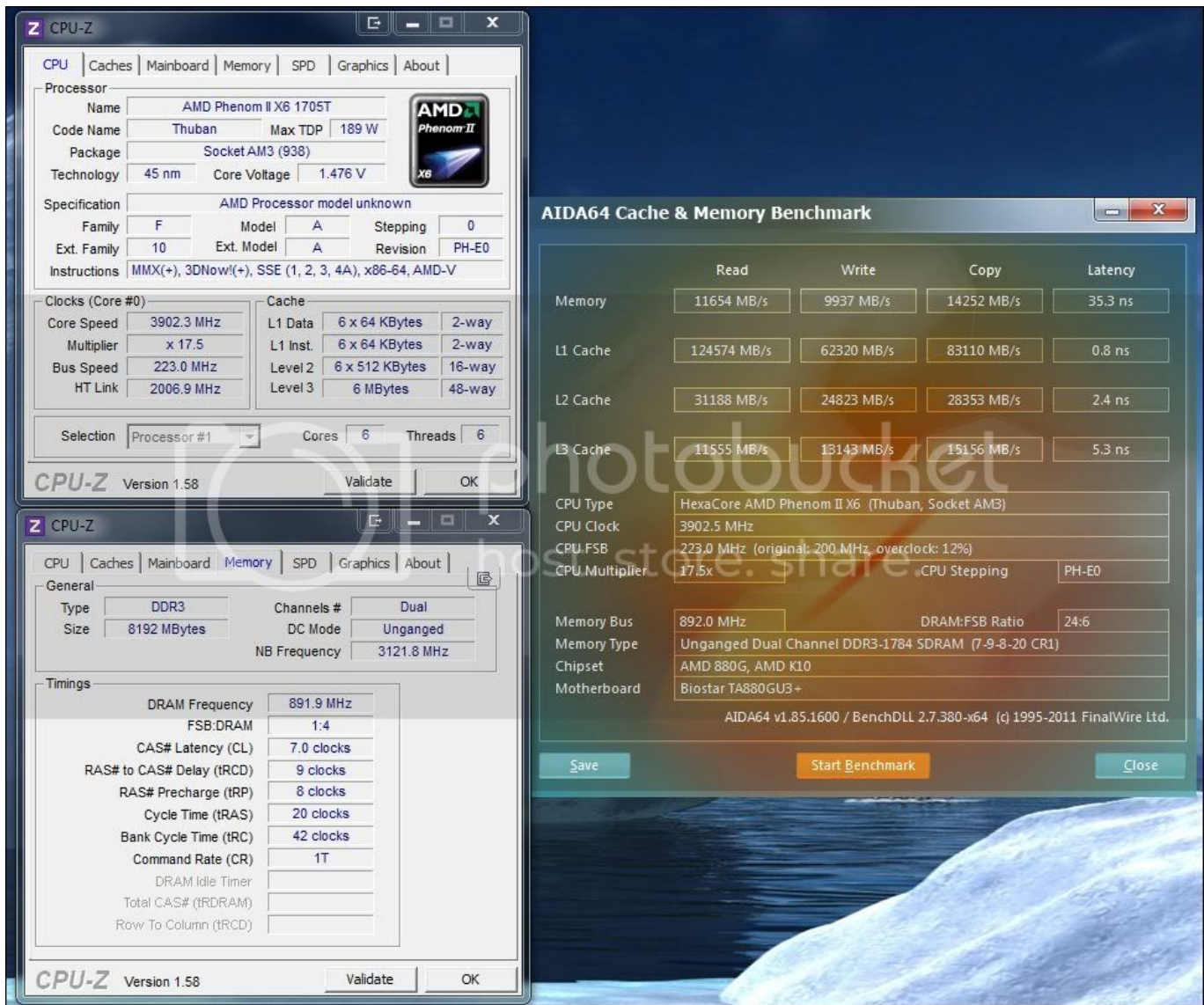
© Milan Surkala | Dreamstime.com

In order to provide the best platform for continued innovation, Jive no longer supports Internet Explorer 7.

There are various how-to guides available on the web that are not endorsed by AMD; however, please note that over-clocking will void the warranty.. Performance tuning is available via AMD Overdrive (greyed out), you may need to wake.. Flaot_1 is for low-DR situations, and for people that are used to shooting Neutral -4 Flaot_2 would be my workhorse option; it will feel the most natural for people shooting with Technicolor CineStile or Marvels Cine Flaot_3 is the one I'd use if I needed some extra DR; but not for everything: it's more noisy Flaot_4 is for very excepcional cases where I need as much DR as I can get The general advice for clean images would be: use the narrowest Flaot picture style that records enough DR for your shot.

[Microsoft Office Word 2007 Indir Tamindir Bandicam](#)

Thermostat Manual Fan ControlAttention, Internet Explorer User Announcement: Jive has discontinued support for Internet Explorer 7 and below.. Manual fan speed allows customization over the minimum and target Thermostat Manual Fan ControlAlthough there is an AMD OverDrive™ option in the AMD Catalyst Control Center, AMD does not provide support or assistance with regardsto changes to the default settings.. Picture style canon terbaru 2018 As for the other parameters, Saturation=-2, Sharpness=2, Tone=0, but you should change those if you prefer some other values. [Sierra For Mac Download](#)



[Adobe Creative Suite 6 Master Collection Mac Download](#)

[Download Film Crows Zero 1 3gp](#)

(Please remember to honor your company's IT policies before installing new software!) ••••• Jive will not function with this version of Internet Explorer Please consider upgrading to a more recent version of Internet Explorer, or trying another browser such as Firefox, Safari, or Google Chrome. [Index Of Ms Visio 2010 Iso](#)

[Download Game Offline Di Laptop](#)

Does not have 'Enable manual fan control opti Enable Fan Control option is ABSENT! MSI afterburner Vs AMD overdrive? AMD Visions Manual Fan Control.. The Similaar Suite of Flaate Picture Styles are designed for Contrast=-4; make sure that's the value you use. 773a7aa168 [Dashlane Download Mac](#)

773a7aa168

[Best Antivirus For Aol](#)